



2019

PRODUCTS CATALOG



*TRACK TESTED
RACER APPROVED!*

New products3, 4**Carburetor Accessories**

■ Billet Throttle Brackets w/Return Springs	5
■ Billet Dual Quad Brackets w/Return Springs	6
■ Throttle Bracket Replacement Cable Ends	6
■ Billet Throttle Return Brackets	6
■ Kickdown Detent Cable Brackets	7
■ Replacement Detent Cables and Throttle Cables	7
■ Manual Throttle Stop Kit	7
■ Carburetor Spacer Plates	8
■ Shear Plates	8
■ Billet Scoop Mounting Brackets	9
■ Aluminum Scoop Trays	9

Fuel System Accessories

■ Billet Fuel Pressure Regulators	10
■ Billet Fuel Log w/Dual Regulators	10
■ Fuel Pressure Regulator Mounting Brackets	11
■ Fuel Pressure Regulator Plumbing Kits	11
■ Adjustable Billet Fuel Log	12
■ Inline Fuel Filters New	12
■ AN Fittings & Hose New	12

Nitrous System Accessories

■ Nitrous Valve Mounting Bracket w/Throttle Brackets ..	16
■ Nitrous Valve Mounting Brackets	17
■ Wide Open Throttle Micro Switch Mounting Brackets ..	17

Engine Accessory Mounting

■ Alternator Mounting Bracket Kits	18
■ Power Steering Pump Mounting Bracket Kits	19

Cooling Products

■ Chevy	
Small Block Chevy	20
Big Block Chevy	20
LT1	20
Chevy Electric Water Pumps	20
Alternator Mounting Bracket Kits for Electric Water Pumps	20
■ Ford	
Ford Electric Water Pumps	21
SB Ford Backing Plates	21
Modular Pumps	21
■ LS electric water pumps	22
LS Accessories	22
LS Coolant Crossover	22
■ Mopar Electric Water Pumps	23
■ DieselElectric Water Pumps	23
■ Remote	
Large Remote Water Pumps	24
Small Remote Water Pumps	24
Remote Water Pump Mounting Brackets	25
Remote Water Pump Plumbing Kits	25

Cooling And Plumbing Accessories

■ O-Ring Style Hose Adapter Fittings	26
■ O-Ring Style Port Adapter Fittings	26
■ 2 to 1 Y-Block	27
■ AN Block Adapters	27

■ Water Pump Spacers	27
■ Radiator Caps	28
■ Billet Swivel Water Necks	28
■ Inline Thermostat Housing	28

Turbo/Supercharger Accessories

■ Billet Intercooler Tank	29
■ Intercooler Plumbing kits	29
■ Custom Tanks New	30
■ Billet Intercooler Caps	30

Billet Caps

■ Billet Filler Cap Kits	31
■ Billet Fuel Cell Caps	31
■ Fuel Cell Gaskets New	31

Engine Accessories

■ Billet Adjustable Timing Pointers	32
■ Billet Inline Oil Filters	32
■ Distributor Hold Downs	33
■ Fuel Pump Block-Off Plates	33
■ SB Chevy Stud Girdles	34
■ Timing Covers	34
■ LS Oil Cooler Block Off Kit New	34
■ LS Dual Bolt Oil Pick Up Bracket Kit New	34
■ LS Valley Covers New	35
■ Gen V AFM Delete and Valley Tray Kit New	35
■ Billet Valve Covers New	36

Transmission

■ Billet Aluminum Flexplates	37
■ Billet Shifter Handles	37
■ Billet Shifter Knobs	37
■ Power Glide Servo Covers	37

Ignition and Electrical

■ LS Coil Mounting Brackets New	38
■ Billet MSD Coil Mounting Bracket	38
■ Billet MSD Box Mounting Bracket	39
■ Billet Switch Panels	39

Chassis and Suspension

■ Header Tether Kits Primary and Collector Tube Clamp Kit	40
■ Billet Wheelie Bar Wheels - Black wheelie bar wheels ..	41
■ PRP Front Motor Plates	42
■ Mid Mount Motor Plates	42
■ Billet Chassis Mounting Brackets New	42

Tools

■ Billet AN Wrenches	43
■ Nitrous Bottle Nut Combo Wrenches	43
■ Billet Wheelie Bar Wheel Wrenches	43

Apparel

■ T-Shirts	44
------------------	----

Additional services

■ Precision Engineering and Design	45
■ PRP Custom Laser Marking	45
■ PRE Performance Engine Shop	46

Shipping & Returns	47
-------------------------------------	-----------

New products

Inline Fuel Filters

- 6061 billet Aluminum / Black Anodized
- Pump filters have a cleanable 100 micron wire mesh filter.
- Carb filters are equipped with a cleanable 40 micron wire mesh filter.
- Available with either a 3/8 barb, 6AN, or 8AN hose ends.



see page 12

LS Valley Covers



- Designed to fit LS1, LS3 engines
- Black anodized
- Comes complete with hardware, and O-ring for easy mounting

see page 35

LS Oil Cooler Block off Kit

- Fits most GM LS oil pans
- Designed to block off the factory oil cooler.
- Two styles available, one with the 1/8 NPT port, and one without.
- O-ring sealed



see page 34

LS Dual Bolt Oil Pick Up Bracket Kit

- Designed to convert single bolt pick up to a dual bolt
- Comes complete with bracket and mounting hardware



see page 34

LS Coil Mounting Brackets

- Engineered to fit LS 1, 2, 6, 7 engines
- Fits Factory and MSD coils
- Designed to be remote mounted
- Comes complete with stand-offs for easy removal



see page 38

Visit us online at prpracingproducts.com to view our extensive high performance product line.



New products

Inline Thermostat Housing

- Easy way to add a remote thermostat
- Works with most GM style thermostats
- Will fit any 1-1/2" upper radiator hose
- Available in clear or black



see page 28

Billet Chassis Mounting Bracket

- Solving the issue of mounting items in a race car
- Made from 6061 aircraft grade aluminum
- Machined to fit tubing from 1-1/2" to 1-3/4"
- Black Anodized



see page 42

Gen V AFM Delete & Valley Tray Kit

- Designed to fit Gen V LT engine
- Available two ways, as a complete AFM delete, or just a valley tray.
- Comes with all necessary fittings and . . . hardware.
- Black anodized



see page 35

Billet Valve Covers

- Billet 6061 Aluminum
- Fully machined with Anodized Finish
- Press in steel insert washers
- Applications include Chevy DRCE 2, . . . Chevy LS, and Chevy Splayed V6



see page 36

**When you purchase a
PRP Racing Product you
can rest assured that you
are buying the BEST!**



Our uniquely-designed throttle bracket assemblies are the answer to securely holding your throttle cable. They are furnished with a specially designed carburetor return spring mount which attaches to the carburetor for a clean installation and smooth return spring operation. Each bracket is crafted from 6061-T6 aluminum and machined to tight tolerances for smooth operation and precision adjustability.



4150 Style Carburetor

Clear	Red	Blue	Polished	Black	Stealth	Accepted Cable
PRP-1000	PRP-1300	PRP-1600	PRP-1900	PRP-2200	PRP-2500	GM Cable
PRP-1002	PRP-1302	PRP-1602	PRP-1902	PRP-2202	PRP-2502	Lokar Cable
PRP-1004	PRP-1304	PRP-1604	PRP-1904	PRP-2204		Morse Cable
PRP-1006	PRP-1306	PRP-1606	PRP-1906	PRP-2206		Ford Cable
PRP-1024	PRP-1324	PRP-1624	PRP-1924	PRP-2224		Mopar Cable

Edelbrock Style Carburetor

Clear	Red	Blue	Polished	Black	Stealth	Accepted Cable
PRP-1016	PRP-1316	PRP-1616	PRP-1916	PRP-2216	PRP-2500	GM Cable
PRP-1018	PRP-1318	PRP-1618	PRP-1918	PRP-2218	PRP-2502	Lokar Cable
PRP-1020	PRP-1320	PRP-1620	PRP-1920	PRP-2220		Morse Cable
PRP-1022	PRP-1322	PRP-1622	PRP-1922	PRP-2222		Ford Cable
PRP-1028	PRP-1328	PRP-1628	PRP-1928	PRP-2228		Mopar Cable

4500 Style Carburetor

Clear	Red	Blue	Polished	Black	Stealth	Accepted Cable
PRP-1008	PRP-1308	PRP-1608	PRP-1908	PRP-2208	PRP-2508	GM Cable
PRP-1010	PRP-1310	PRP-1610	PRP-1910	PRP-2210	PRP-2510	Lokar Cable
PRP-1012	PRP-1312	PRP-1612	PRP-1912	PRP-2212		Morse Cable
PRP-1014	PRP-1314	PRP-1614	PRP-1914	PRP-2214		Ford Cable
PRP-1026	PRP-1326	PRP-1626	PRP-1926	PRP-2226		Mopar Cable

SV1 & Street Demon Style Carburetor

Clear	Red	Blue	Polished	Black	Accepted Cable
PRP-1030				PRP-2230	Fits SV1 Carb Accepts GM Style Cable
PRP-1031				PRP-2231	Fits SV1 Carb Accepts Lokar Style Cable
PRP-1035	PRP-1335	PRP-1635	PRP-1935	PRP-2235	Fits Street Demon Carb Accepts GM Cable
PRP-1036	PRP-1336	PRP-1636	PRP-1936	PRP-2236	Fits Street Demon Carb Accepts Lokar Cable
PRP-1037	PRP-1337	PRP-1637	PRP-1937	PRP-2237	Fits Street Demon Carb Accepts Ford Cable
PRP-1038	PRP-1338	PRP-1638	PRP-1938	PRP-2238	Fits Street Demon Carb Accepts Mopar Cable

Dual Quad
Brackets

Our dual quad throttle bracket kit is furnished with a unique return spring mount, and a cable mount of your choice. Includes an adjustable rod for connecting the two carburetor linkages. This kit is designed for two forward facing Edelbrock carburetors, and is available in either a clear or black anodized finish.



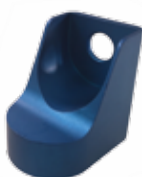
Clear	Black	Description
-------	-------	-------------

PRP-1040	PRP-2240	Dual Quad Bracket, Fits Edelbrock Carb & GM Cable
PRP-1041	PRP-2241	Dual Quad Bracket, Fits Edelbrock Carb & Lokar Cable

With these replacement ends you can change your throttle cable easily without having to change the whole bracket. Available for GM, Lokar, Morse, Ford, and Mopar style cables. Each end comes in Clear, Red, Blue, Polished or Black to match your specific throttle bracket.

Clear	Red	Blue	Polished	Black	Description
-------	-----	------	----------	-------	-------------

PRP-1200	PRP-1500	PRP-1800	PRP-2100	PRP-2400	GM Replacement Cable End Only
PRP-1201	PRP-1501	PRP-1801	PRP-2101	PRP-2401	Lokar Replacement Cable End Only
PRP-1202	PRP-1502	PRP-1802	PRP-2102	PRP-2402	Morse Replacement Cable End Only
PRP-1203	PRP-1503	PRP-1803	PRP-2103	PRP-2403	Ford Replacement Cable End Only
PRP-1204	PRP-1504	PRP-1804	PRP-2104	PRP-2404	Mopar Replacement Cable End Only



PRP's billet throttle return brackets are the answer for those vehicles that have solid mechanical linkage. PRP has an application that fits your needs no matter whether it is for race or street. The brackets are machined from 6061-T6 billet aluminum. Each bracket is equipped with dual stainless steel return springs and is fully adjustable. Available in polished finish or a clear, red, blue, or black anodized finishes.



Clear	Red	Blue	Polished	Black	Description
-------	-----	------	----------	-------	-------------

PRP-1050	PRP-1350	PRP-1650	PRP-1950	PRP-2250	Throttle Return Spring Bracket Fits 4150 & Edelbrock Carb
PRP-1051	PRP-1351	PRP-1651	PRP-1951	PRP-2251	Throttle Return Spring Brackets Fits 4500 Carb
PRP-1052	PRP-1352	PRP-1652	PRP-1952	PRP-2252	Throttle Return Spring Bracket Fits 4500 Gen 3 Carb



Return Brackets

Here is the solution for automatic transmissions, with PRP's kickdown cable bracket you no longer have to worry about using a second bracket or having adjustment problems. This kickdown bracket easily attaches to the bottom of our throttle bracket with stainless steel hardware. The kickdown end is fully adjustable to find the perfect tension for your cable. Fits 700-R4, 200-R4 and Turbo 350 transmissions.

Clear	Red	Blue	Polished	Black	Description
PRP-1250	PRP-1550	PRP-1850	PRP-2150	PRP-2450	GM Style Kickdown Detent Cable Bracket
PRP-1251	PRP-1551	PRP-1851	PRP-2151	PRP-2451	Lokar Style Kickdown Detent Cable Bracket



Kickdown Cable Bracket

PRP offers a wide variety of replacement cables. If your cable is worn or broken PRP has what you need. Cables are available for GM-style, Ford-style, and Lokar-style. Also available for GM detent kickdown

Part #	Description
PRP-2000	GM - Style Kickdown Cable
PRP-2001	Ford-Style Throttle Cable.
PRP-2002	GM - Style Throttle Cable
PRP-2010	24 Inch Lokar - Style Throttle Cable
PRP-2011	36 Inch Lokar - Style Throttle Cable



Replacement Detent Cable & Throttle Cables

Adjustable Throttle Stop. There are a number of bracket racing classes where electronic devices are not legal, and when index racing the use of a throttle stop might be needed. We developed a simple but effective device that mounts directly to our already popular throttle bracket so you can control your throttle. Two jam nuts are loosened on an adjustable rod to roll the throttle cable either open or closed to find your perfect tune. Simple and easy adjustment allows for no more engine tuning, like "pulling timing out". All kit components are made from billet aluminum, and all hardware is stainless steel.

Part #	Description
PRP-2460	4150 Style Carbs
PRP-2461	4500 Style Carbs



Manual Throttle Stop Kit

These **Carburetor Spacer Plates** are CNC machined from billet aluminum. They are available in 16 different versions and are ultra-light. Each one of our 4-hole and open spacers are precision bored to match carburetor base plates for a precise fit. All of our spacers are dyno tested so the high performance enthusiast can fine-tune his engine for maximum performance. Spacers are available in 1/2", 1" and 2" sizes for 4150 and 4500 series carburetors.


Part #	Description
PRP-5000	.500" 4150 Style Carb Spacer Plate, Open Center
PRP-5001	1.00" 4150 Style Carb Spacer Plate, Open Center
PRP-5002	2.00" 4150 Style Carb Spacer Plate, Open Center
PRP-5003	.500" 4500 Style Carb Spacer Plate, Open Center
PRP-5004	1.00" 4500 Style Carb Spacer Plate, Open Center
PRP-5005	2.00" 4500 Style Carb Spacer Plate, Open Center
PRP-5108	.500" 850 CFM Style Carb Spacer Plate, 4-hole
PRP-5109	1.00" 850 CFM Style Carb Spacer Plate, 4-hole
PRP-5110	1.00" 850 CFM Style Carb Spacer Plate, 4 to 1
PRP-5111	1.00" 850 CFM Style Carb Spacer Plate, Tapered
PRP-5112	2.00" 850 CFM Style Carb Spacer Plate, 4-hole
PRP-5113	.500" 4500 Style Carb Spacer Plate, 4-hole
PRP-5114	1.00" 4500 Style Carb Spacer Plate, 4-hole
PRP-5115	2.00" 4500 Style Carb Spacer Plate, 4-hole
PRP-5700	1.00" 850 CFM Style Drop-In Spacer Kit



Shear plate

PRP's specially designed carburetor spacers have a built-in shear plate design to give you maximum performance from your race engine. These 7-degree tapered bore plates are used by many NHRA Comp and Pro Stock engine builders. They are designed to build low pressure under the throttle plate and help the vacuum signal to the carburetor booster. Each plate is machined from 6061-T6 billet aluminum and anodized clear for corrosion protection. These plates are available for 4150 with a 1-3/4" bore and 4500 carburetors with a 2" bore, or a 2-1/8" bore.

Part #	Description
PRP-5200	1/2" Holley 4150 Shear Plate
PRP-5300	2.000" Bore Holley 4500 Style Shear Plate
PRP-5400	2.125" Bore Holley 4500 Style Shear Plate



PRP's **scoop mounting brackets** are the answer to all your above the intake mounting wrapped into one. This bracket will mount your throttle linkage, throttle return springs, mount your scoop, and even hold your nitrous solenoids. These 1/4" billet aluminum brackets are CNC machined and anodized for protection. Each bracket comes complete with dual return springs and a cable mount for a Morse cable. Kit is also equipped with adjustable aluminum standoffs to mount your scoop tray.

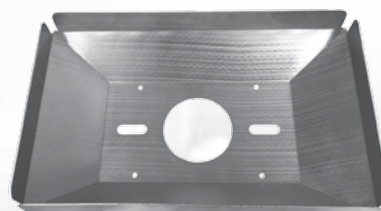
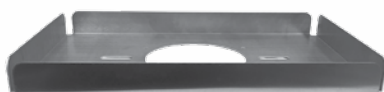
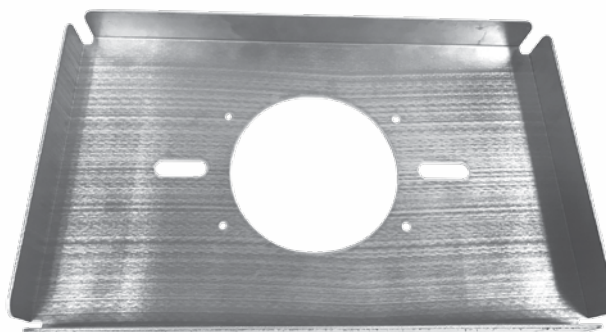


**Billet Scoop
Mounting Brackets**

Clear	Black	Description
PRP-1085	PRP-2285	4150 Scoop Mount Bracket
PRP-1086	PRP-2286	4500 Scoop Mount Bracket
PRP-1090	PRP-2290	4150 Scoop Mount Bracket w/ Nitrous Mount
PRP-1091	PRP-2291	4500 Scoop Mount Bracket w/ Nitrous Mount

PRP has designed a **scoop tray** to compliment their scoop brackets. Each tray is made from .090 thick aluminum and precision laser cut. Each tray is cut from one piece of material which will help prevent cracking and breaking from extra welds. These trays are available in either a flat version or a 3" raised version depending on your mounting needs. All trays have an opening of 13-3/8" X 21-1/2", and will fit all Harwood Dragster Scoop part #'s 3152, 3153, 3155, 3156, 3158, 3159.

Part #	Description
PRP-1095	4150 Flat Scoop Mount Tray
PRP-1096	4500 Flat Scoop mount Tray
PRP-1097	4150 Elevated Scoop Mount Tray
PRP-1098	4500 Elevated Scoop Mount Tray



Aluminum Scoop Trays

PRP's Billet fuel pressure regulators are the answer when good fuel control is needed at the carburetor. Each unit is constructed as a 2-port design and is fully adjustable. Available with 3/8" NPT, 1/2" NPT, or 10AN inlets, and outlet ports including 3/8" NPT, or 8AN. The front of the regulator includes two 1/8" NPT accessory ports. Each regulator is available with or without an additional return port. Regulators are machined from 6061-T6 aluminum and anodized for corrosion protection. Fully assembled with stainless steel hardware and optional billet mounting brackets.

Clear	Description
-------	-------------

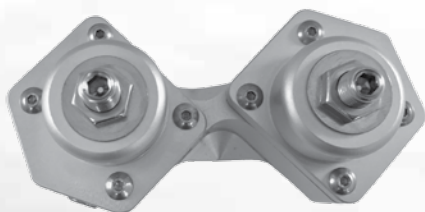
PRP-3000	Billet Fuel Pressure Regulator
PRP-3001	Billet Fuel Pressure Regulator, Large Port 1/2" NPT Inlet
PRP-3002	Billet Fuel Pressure Regulator, Large Port 10AN Inlet and 8AN Outlet
PRP-3005	Billet Fuel Pressure Regulator, Return Style
PRP-3007	Billet Fuel Pressure Regulator 3/8" NPT Inlet, 3/8" Outlet, Alcohol
PRP-3008	Billet Fuel Pressure Regulator, Large Port 1/2" NPT Inlet, Alcohol
PRP-3009	Billet Fuel Pressure Regulator, Large Port 10AN Inlet, And 8AN Outlets, Alcohol
PRP-3015	Replacement Diaphragm Gasoline
PRP-3016	Replacement Diaphragm Alcohol



PRP's billet fuel log with dual regulators are the answer to eliminating any fuel restrictions, along with multiple fittings and adapters. Each unit is machined from one piece of billet aluminum and incorporates two 2-port regulators from one 1/2" NPT, or 10AN inlet fuel supply. Each regulator has two 3/8" NPT, or 8AN exits that are individually adjustable. Each regulator also incorporates two 1/8" NPT accessory ports. Units can be mounted in series for four 2-port regulator with optional "T" fitting. All units are clear anodized for corrosion protection.

Clear	Description
-------	-------------

PRP-3010	Billet Fuel Log W/ Two 2-Port Regulators - 1/2" Inlet
PRP-3011	Billet Fuel Log W/ Two 2-Port Regulators - 10AN Inlet



Mount your Regulator with Ease!

These brackets are made from 6061-T6 billet aluminum and will tightly secure several different style regulators. All brackets have a direct fit bolt pattern drilled to accept PRP, Holley/Quickfuel, Magna Fuel, Aeromotive and Mallory regulators. The kit comes complete with stainless steel button head bolts and small aluminum spacers for easy installation. These brackets are available in a clear, red, blue, or black anodized finish.

Compatible Regulators:

Aeromotive Regulators: 027-13201, 027-13205

Holley Regulators: 12-704, 12-803, 12-804, 12-840, 12-843

Quickfuel Regulators: 30-803, 30-900

JEGS Regulators: 555-15908, 555-15909, 555-15912

Magna Fuel Regulator: MP-9433, MP-9633, MP-9833

Mallory Regulator: 650-4207, 650-4309

Clear	Red	Blue	Black	Stealth	Description
PRP-1060	PRP-1360	PRP-1660	PRP-2260	PRP-2560	Fuel Regul Brkt Fits 4150 Carb & Aero
PRP-1061	PRP-1361	PRP-1661	PRP-2261	PRP-2561	Fuel Regul Brkt Fits 4150 Carb & Holley
PRP-1062	PRP-1362	PRP-1662	PRP-2262		Fuel Regul Brkt Fits 4150 Carb & Mag Fuel Regul
PRP-1063	PRP-1363	PRP-1663	PRP-2263		Fuel Regul Brkt Fits 4150 Carb & Mall Regul
PRP-1064	PRP-1364	PRP-1664	PRP-2264		Fuel Regul Brkt Fits 4150 Carb & Mag Fuel 4 Port Regul
PRP-1065	PRP-1365	PRP-1665	PRP-2265	PRP-2565	Fuel Regul Brkt Fits 4500 Carb & Aero Regul
PRP-1066	PRP-1366	PRP-1666	PRP-2266	PRP-2566	Fuel Regul Brkt Fits 4500 Carb & Holley Regul
PRP-1067	PRP-1367	PRP-1667	PRP-2267		Fuel Regul Brkt Fits 4500 Carb & Mag Fuel Regul
PRP-1068	PRP-1368	PRP-1668	PRP-2268		Fuel Regul Brkt Fits 4500 Carb & Mall Regul
PRP-1069	PRP-1369	PRP-1669	PRP-2269		Fuel Regul Brkt Fits 4500 Carb & Mag Fuel 4 Port Regul
PRP-1070	PRP-1370	PRP-1670			Fuel Regul Brkt Fits 4500 Carb & Product Eng. Regul
PRP-1071	PRP-1371	PRP-1671			Fuel Regul Brkt Fits 4500 Carb & Barry Grant Regul



Regulator Plumbing. PRP's fuel pressure regulator mounting brackets have taken the guess work out of mounting for years, and now we have taken the guess work out of plumbing! With PRP's new regulator plumbing kits you can plumb your regulator quicker, easier, and cleaner. Each kit comes with a length of #6 hose, and all necessary #6 fittings to make the connection to carb. Complete kits are also available, which include: regulator, mounting bracket, and a #6 plumbing kit.

Part #	Description
PRP-3025	6AN Regulator Plumbing Kit
PRP-3030	Regulator & 6AN Plumbing Kit, Includes 3/8" IN Reg & 4150 Bracket
PRP-3031	Regulator & 6AN Plumbing Kit, Includes 3/8" IN Reg & 4500 Bracket
PRP-3035	Regulator & 6AN Plumbing Kit, Includes 1/2" IN Reg & 4150 Bracket
PRP-3036	Regulator & 6AN Plumbing Kit, Includes 1/2" IN Reg & 4500 Bracket



PRP's billet telescopic fuel logs are the perfect addition to any engine. Each log is equipped with all components to fit either a 4150 or a 4500 series carburetor. The log itself features a ball and socket assembly that swivels for additional clearance to other accessories. Each log is equipped with two 10AN inlet ports, and can be used for either front or rear entry. A blank plug and an 8AN adapter is also supplied to help finalize your mounting configuration.



Part #	Description
--------	-------------

PRP-3050	Black Billet Adjustable Fuel Log Kit
PRP-3051	Fuel Log Replacement Seal Kit

PRP's new inline fuel filters are the answer to protecting that fuel system and engine from harmful debris. Pump filters are equipped with a cleanable 100 micron wire mesh filter. Carb filters are equipped with a cleanable 40 micron wire mesh filter. Each filter housing has two removable ends for easy assembly and cleaning. Constructed from 6061 billet aluminum and black anodized. Designed for street or race, and available with either a 3/8 barb, 6AN, or 8AN hose ends.

New

Part #	Description
--------	-------------

PRP-3055	Inline Fuel Filter 3/8 Hose... 40 Micron Filter
PRP-3056	Inline Fuel Filter 6AN... 40 Micron Filter
PRP-3057	Inline Fuel Filter 8AN... 40 Micron Filter
PRP-3060	Replacement 40 Micron Filter
PRP-3065	Inline Fuel Filter 3/8 Hose... 100 Micron Filter
PRP-3066	Inline Fuel Filter 6AN... 100 Micron Filter
PRP-3067	Inline Fuel Filter 8AN... 100 Micron Filter
PRP-3070	Replacement 100 Micron Filter
PRP-3075	Inline Fuel Filter Mounting Bracket



optional mounting bracket

Pipe Reducer Bushing

New

Part #	Description
--------	-------------

PRP-3390	Pipe Reducer Bushing - 1/4" X 1/8" NPT
PRP-3391	Pipe Reducer Bushing - 3/8" X 1/8" NPT
PRP-3392	Pipe Reducer Bushing - 3/8" X 1/4" NPT
PRP-3393	Pipe Reducer Bushing - 1/4" X 1/8" NPT



Female Pipe Thread Coupler

New

Part #	Description
--------	-------------

PRP-3395	Female Pipe Thread Coupler 1/8"
PRP-3396	Female Pipe Thread Coupler 1/4"
PRP-3397	Female Pipe Thread Coupler 3/8"



Female Nut To Male Expander **New**

Part #	Description
PRP-3400	4AN Female Nut to 6AN Male Expander
PRP-3401	6AN Female Nut to 8AN Male Expander
PRP-3402	8AN Female Nut to 10AN Male Expander
PRP-3403	10AN Female Nut to 12AN Male Expander
PRP-3404	12AN Female Nut to 16AN Male Expander



Female to Male Reducer **New**

Part #	Description
PPRP-3405	4AN Female To 3AN Male Reducer
PRP-3406	6AN Female To 4AN Male Reducer
PRP-3407	8AN Female To 6AN Male Reducer
PRP-3408	10AN Female To 8AN Male Reducer
PRP-3409	12AN Female To 10AN Make Reducer



Flare to Pipe **New**

Part #	Description
PRP-3415	4AN Flare To Pipe Tee 1/8" NPT
PRP-3416	6AN Flare To Pipe Tee 1/4" NPT
PRP-3417	8AN Flare To Pipe Tee 3/8" NPT



Bulkhead Nut **New**

Part #	Description
PRP-3420	4AN Bulkhead Nut
PRP-3421	6AN Bulkhead Nut
PRP-3422	8AN Bulkhead Nut
PRP-3423	10AN Bulkhead Nut
PRP-3424	12AN Bulkhead Nut



Straight Bulkhead Flare **New**

Part #	Description
PRP-3368	4AN Straight Bulkhead Flare
PRP-3369	6AN Straight Bulkhead Flare
PRP-3372	12AN Straight Bulkhead Flare



Hose

Part #	Description
PRP-3200	4AN Braided Hose
PRP-3201	6AN Braided Hose
PRP-3202	8AN Braided Hose
PRP-3203	10AN Braided Hose
PRP-3204	12AN Braided Hose
PRP-3205	16AN Braided Hose
PRP-3209	4AN Power-Lite Hose
PRP-3210	6AN Power-Lite Hose
PRP-3211	8AN Power-Lite Hose
PRP-3212	10AN Power-Lite Hose
PRP-3213	12AN Power-Lite Hose
PRP-3214	16AN Power-Lite Hose



Straight Swivel

Part #	Description
PRP-3225	4AN Straight Swivel Hose End
PRP-3226	6AN Straight Swivel Hose End
PRP-3227	8AN Straight Swivel Hose End
PRP-3228	10AN Straight Swivel Hose End
PRP-3229	12AN Straight Swivel Hose End
PRP-3230	16AN Straight Swivel Hose End



45 Degree Elbow

Part #	Description
PRP-3235	4AN 45 Degree Elbow
PRP-3236	6AN 45 Degree Elbow
PRP-3237	8AN 45 Degree Elbow
PRP-3238	10AN 45 Degree Elbow
PRP-3239	12AN 45 Degree Elbow
PRP-3240	16AN 45 Degree Elbow



90 Degree Elbow

Part #	Description
PRP-3245	4AN 90 Degree Elbow
PRP-3246	6AN 90 Degree Elbow
PRP-3247	8AN 90 Degree Elbow
PRP-3248	10AN 90 Degree Elbow
PRP-3249	12AN 90 Degree Elbow
PRP-3250	16AN 90 Degree Elbow



Flare to Pipe Adapter w/ Port

Part #	Description
PRP-3270	6AN Flare Union Adapter with 1/8" Port
PRP-3271	8AN Flare Union Adapter with 1/8" Port
PRP-3275	6AN Flare to 3/8" Pipe Adapter with 1/8" Port
PRP-3276	8AN Flare to 1/4" Pipe Adapter with 1/8" Port
PRP-3280	6AN Straight Swivel Coupler
PRP-3281	8AN Straight Swivel Coupler
PRP-3282	10AN Straight Swivel Coupler
PRP-3283	12AN Straight Swivel Coupler



150 Degree Elbow

Part #	Description
PRP-3260	6AN 150 Degree Elbow
PRP-3261	8AN 150 Degree Elbow
PRP-3262	10AN 150 Degree Elbow
PRP-3263	12AN 150 Degree Elbow



180 Degree Elbow

Part #	Description
PRP-3265	6AN 180 Degree Elbow
PRP-3266	8AN 180 Degree Elbow
PRP-3267	10AN 180 Degree Elbow
PRP-3268	12AN 180 Degree Elbow



Straight Flare to Pipe Adapters

Part #	Description
PRP-3295	3AN to 1/8" Pipe, Adapter Fitting
PRP-3296	4AN to 1/8" Pipe, Adapter Fitting
PRP-3297	6AN to 1/4" Pipe, Adapter Fitting
PRP-3298	6AN to 3/8" Pipe, Adapter Fitting
PRP-3299	8AN to 3/8" Pipe, Adapter Fitting
PRP-3300	10AN to 3/8" Pipe, Adapter Fitting
PRP-3301	10AN to 1/2" Pipe, Adapter Fitting
PRP-3303	12AN to 1/2" Pipe, Adapter Fitting



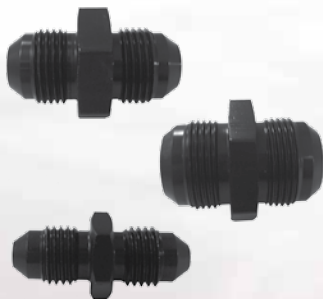
Carburetor Inlet

Part #	Description
PRP-3290	8AN 7/8" - 20
PRP-3291	6AN 7/8" - 20
PRP-3292	6AN 5/8" - 20
PRP-3293	6AN 9/16" - 24



Flare Union

Part #	Description
PRP-3305	4AN Flare Union
PRP-3306	6AN Flare Union
PRP-3307	8AN Flare Union
PRP-3308	10AN Flare Union
PRP-3309	12AN Flare Union
PRP-3310	16AN Flare Union



Flare Plugs

Part #	Description
PRP-3315	3AN Flare Plug
PRP-3316	4AN Flare Plug
PRP-3317	6AN Flare Plug
PRP-3318	8AN Flare Plug
PRP-3319	10AN Flare Plug
PRP-3320	12AN Flare Plug
PRP-3321	16AN Flare Plug



Flare Reducers

Part #	Description
PRP-3325	4AN to 3AN Flare Reducer
PRP-3326	6AN to 4AN Flare Reducer
PRP-3327	8AN to 6AN Flare Reducer
PRP-3328	10AN to 8AN Flare Reducer
PRP-3329	12AN to 10AN Flare Reducer
PRP-3330	16AN to 12AN Flare Reducer



Flare Caps

Part #	Description
PRP-3335	3AN Flare Cap
PRP-3336	4AN Flare Cap
PRP-3337	6AN Flare Cap
PRP-3338	8AN Flare Cap
PRP-3339	10AN Flare Cap
PRP-3340	12AN Flare Cap
PRP-3282	10AN Straight Swivel Coupler
PRP-3283	12AN Straight Swivel Coupler



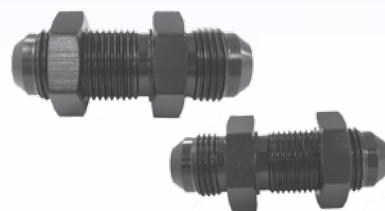
45 Degree Flare to Pipe Elbow Adapters

Part #	Description
PRP-3360	4AN to 1/8" Pipe, 45 Degree Adapter Fitting
PRP-3361	6AN to 1/8" Pipe, 45 Degree Adapter Fitting
PRP-3362	6AN to 1/4" Pipe, 45 Degree Adapter Fitting
PRP-3363	8AN to 3/8" Pipe, 45 Degree Adapter Fitting
PRP-3364	10AN to 1/2" Pipe, 45 Degree Adapter Fitting



Straight Bulkhead Flare

Part #	Description
PRP-3370	8AN Straight Bulkhead Flare
PRP-3371	10AN Straight Bulkhead Flare



Radius Port to AN

Part #	Description
PRP-3375	6AN Port to 6AN Hose
PRP-3376	8AN Port to 8AN Hose
PRP-3377	10AN Port to 10AN Hose



120 Degree Elbow

Part #	Description
PRP-3255	6AN 120 Degree Elbow
PRP-3256	8AN 120 Degree Elbow
PRP-3257	10AN 120 Degree Elbow
PRP-3258	12AN 120 Degree Elbow



90 Degree Flare to Pipe Elbow

Part #	Description
PRP-3345	4AN to 1/8" Pipe, 90 Degree Adapter Fitting
PRP-3346	4AN to 1/4" Pipe, 90 Degree Adapter Fitting
PRP-3347	6AN to 1/8" Pipe, 90 Degree Adapter Fitting
PRP-3348	6AN to 1/4" Pipe, 90 Degree Adapter Fitting
PRP-3349	6AN to 3/8" Pipe, 90 Degree Adapter Fitting
PRP-3350	8AN to 1/4" Pipe, 90 Degree Adapter Fitting
PRP-3351	8AN to 3/8" Pipe, 90 Degree Adapter Fitting
PRP-3352	8AN to 1/2" Pipe, 90 Degree Adapter Fitting
PRP-3353	10AN to 1/2" Pipe, 90 Degree Adapter Fitting
PRP-3354	10AN to 3/4" Pipe, 90 Degree Adapter Fitting
PRP-3355	12AN to 1/2" Pipe, 90 Degree Adapter Fitting



Aluminum Weld Bungs

Part #	Description
PPRP-3380	6AN Male Flare Weld Fitting
PRP-3381	8AN Male Flare Weld Fitting
PRP-3382	10AN Male Flare Weld Fitting
PRP-3383	12AN Male Flare Weld Fitting
PRP-3385	1/8" Pipe Female Weld Fitting
PRP-3386	1/4" Pipe Female Weld Fitting
PRP-3387	3/8" Pipe Female Weld Fitting
PRP-3388	1/2" Pipe Female Weld Fitting



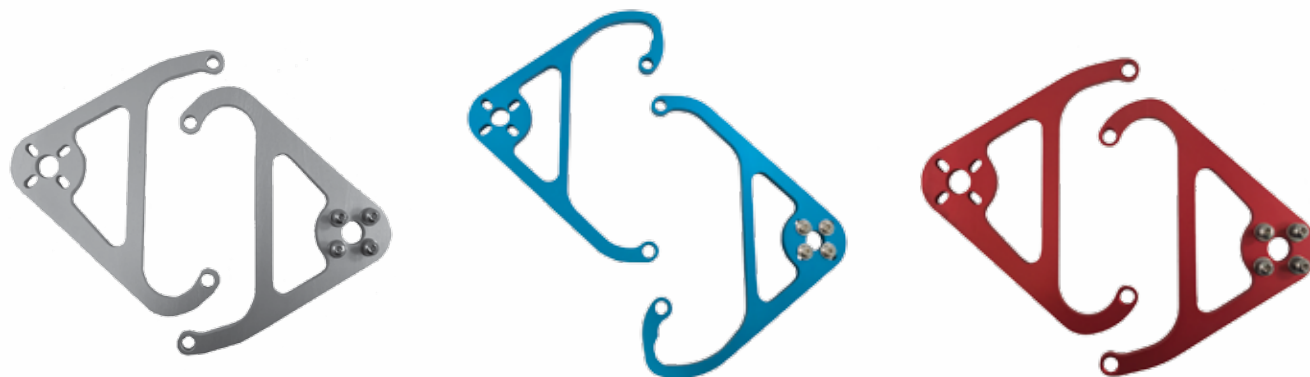
PRP's exclusive nitrous solenoid mounting brackets will not only mount your nitrous solenoids but also hold your throttle linkage and return springs. These revolutionary bracket kits come complete with stainless steel mounting hardware and feature direct fit cable ends for any stock or aftermarket throttle cable. Mounting bracket kits are available for single stage nitrous systems and will fit 4150/4160, Edelbrock, and 4500 Dominator style carburetors. Each bracket is made from 6061-T6 billet aluminum and is available in a clear, red, blue, and black anodized finish.

Clear	Red	Blue	Black	Description
PRP-1100	PRP-1400	PRP-1700	PRP-2300	Fits 4150 Carbs. Inc TBRKT w/ Spr, Accepts GM Cable
PRP-1101	PRP-1401	PRP-1701	PRP-2301	Fits 4150 Carbs. Inc TBRKT w/ Spr, Accepts Lokar Cable
PRP-1102	PRP-1402	PRP-1702	PRP-2302	Fits 4150 Carbs. Inc TBRKT w/ Spr, Accepts Morse Cable
PRP-1103	PRP-1403	PRP-1703	PRP-2303	Fits 4150 Carbs. Inc TBRKT w/ Spr, Accepts Ford Cable
PRP-1104	PRP-1404	PRP-1704	PRP-2304	Fits 4150 Carbs. Inc TBRKT w/ Spr, Accepts Mopar Cable
PRP-1110	PRP-1410	PRP-1710	PRP-2310	Fits 4500 Carbs. Inc TBRKT w/ Spr, Accepts GM Cable
PRP-1111	PRP-1411	PRP-1711	PRP-2311	Fits 4500 Carbs. Inc TBRKT w/ Spr, Accepts Lokar Cable
PRP-1112	PRP-1412	PRP-1712	PRP-2312	Fits 4500 Carbs. Inc TBRKT w/ Spr, Accepts Morse Cable
PRP-1113	PRP-1413	PRP-1713	PRP-2313	Fits 4500 Carbs. Inc TBRKT w/ Spr, Accepts Ford Cable
PRP-1114	PRP-1414	PRP-1714	PRP-2314	Fits 4500 Carbs. Inc TBRKT w/ Spr, Accepts Mopar Cable



PRP has developed the answer to safely and securely mounting your nitrous and fuel solenoids. These brackets easily mount on the carburetor studs for a clean addition to any engine. Mounting brackets are available for single stage nitrous systems and will fit 4150/4160 Edelbrock, and 4500 Dominator style carburetors. Kits come complete with all stainless steel mounting hardware and are available in clear, red, blue, and black anodized finishes.

Clear	Red	Blue	Black	Description
PRP-1105	PRP-1405	PRP-1705	PRP-2305	Ntrs Vlve Mnt Kit, Sing Stg Syst Fits 4150 Carb
PRP-1115	PRP-1415	PRP-1715	PRP-2315	Ntrs Vlve Mnt Kit, Sing Stg Syst 4500 Brkt Only



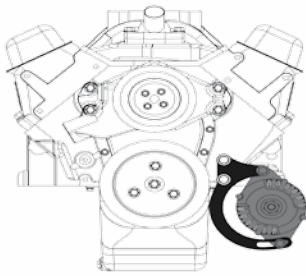
PRP has done it again with these uniquely-made **micro switch mounting brackets.** Each bracket is made from lightweight billet aluminum and is precision fit to your carburetor for precise activation of the micro switch. Brackets will fit multiple applications including Holley 4150/4500 HP and 4150/4500 non-HP series carburetors. The bracket will work with a standard secondary arm as well as a throttle adjustment-screw secondary arm. Each bracket kit comes complete with stainless steel mounting hardware for the micro switch as well as for mounting the bracket. Bracket kits are available with or without a micro switch.

Black	Description
PRP-2050	Black Wide Open THRT Ntrs Swt Mnt Kit for 4150 Carb, Brkt Only
PRP-2051	Black Wide Open THRT Ntrs Swt Mnt Kit for 4150 Carb, Inc Micro Swt
PRP-2060	Black Wide Open THRT Ntrs Swt Mnt Kit for 4500 Carb, Brkt Only
PRP-2061	Black Wide Open THRT Ntrs Swt Mnt Kit for 4500 Carb, Inc Micro Swt

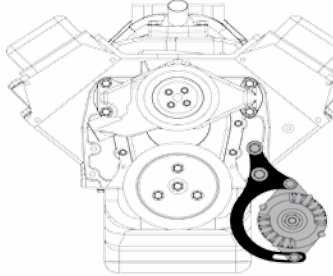


PRP billet alternator mounting brackets are the answer to securely mounting your alternator with ease. All brackets are made from 6061-T6 billet aluminum and are machined to a tight tolerance for a precision fit. All kits include necessary spacers and mounting hardware along with a full instruction sheet. All brackets and spacers are black anodized for long lasting corrosion protection. NOTE: Some variations may not be available. ALSO NOTE: Part # 8157, and 8158 will work with a motor plate.

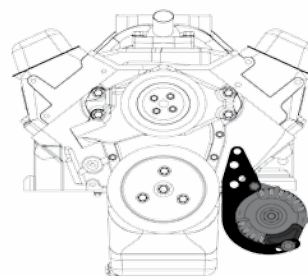
Note: see website for full application chart.



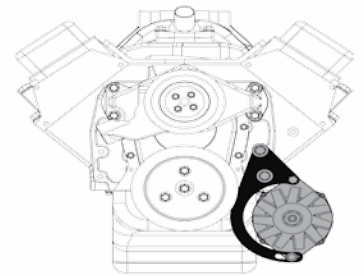
PRP-8150
Low Mount Alt Kit,
Fits S/B Chevy Driver Side
w/ Super Mini Alt



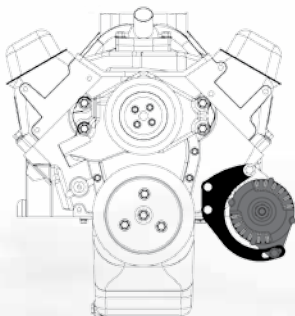
PRP-8151
Low Mount Alt Kit,
Fits B/B Chevy Driver Side or
Passenger Side
w/ Super Mini Alt



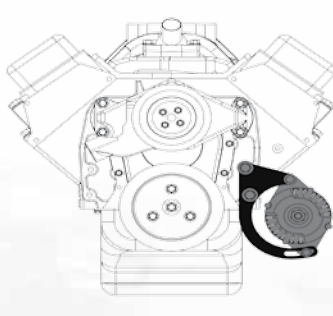
PRP-8152
Low Mount Alt Kit,
Fits s/B Chevy Driver Side or B/B
Chevy Driver Side or Passenger Side
w/ Super Mini Alt



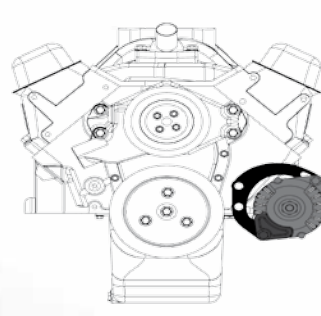
PRP-8153
Low Mount Alt Kit,
Fits B/B Chevy Driver Side or
Passenger Side w/ Full Size Alt



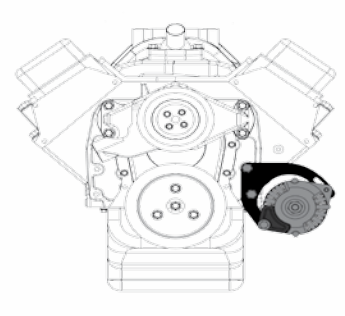
PRP-8155
Mid Mount Alt Kit,
Fits S/B Chevy Driver Side
w/ Super Mini Alt



PRP-8156
Mid Mount Alt Kit,
Fits B/B Chevy Driver Side
w/ Super Mini Alt

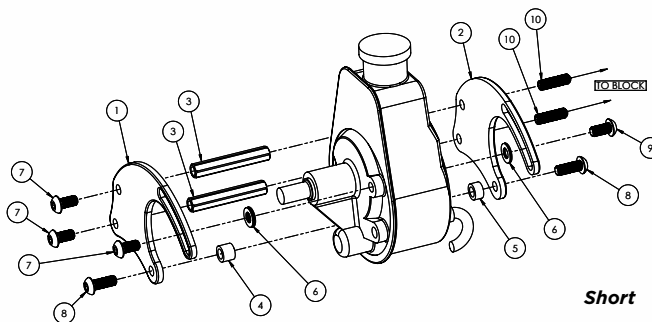
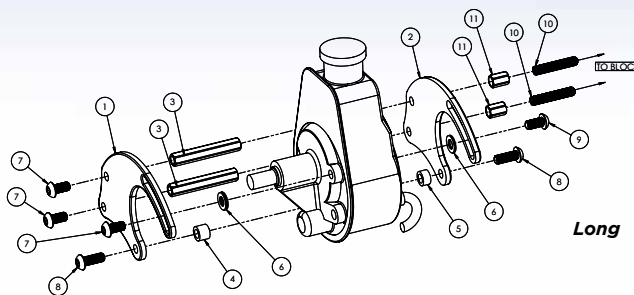
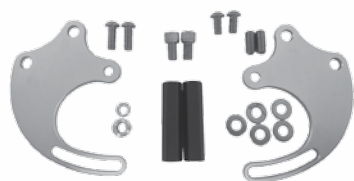
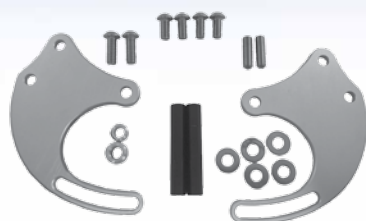


PRP-8157
Mid Mount Alt Kit,
Fits S/B Chevy Driver Side
w/ Ultra Mini Alt (will work
with Motor Plate)



PRP-8158
Mid Mount Alt Kit,
Fits B/B Chevy Driver Side
w/ Ultra Mini Alt (will
work with Motor Plate)

PRP's Power Steering Pump Mounting Bracket kits are designed to work with a non-metric GM Saginaw-style pump with attached reservoir. Attaches to lower left driver's side of the vehicle and is made from 6061-T6 billet aluminum. Each kit includes stainless steel mounting hardware.



To see part lists visit us online at prpracingproducts.com

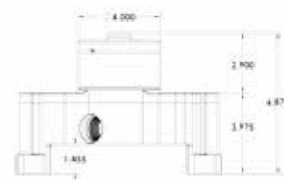
Part#	Description
PRP-8200	Small Block Chevy P/S Pump Mount Kit, Fits Short Water Pump
PRP-8201	Big Block Chevy P/S Pump Mount Kit, Fits Short Water Pump
PRP-8205	Small Block Chevy P/S Pump Mount Kit, Fits Long Water Pump
PRP-8206	Big Block Chevy P/S Pump Mount Kit, Fits Long Water Pump



Ford Performance!

PRP offers direct fit electric **water pumps for small block Ford**. These units will fit front covers from 1994 thru 1993 and will work in conjunction with all of our backing plates listed below. All units are CNC machined out of 6061 billet aluminum and assembled with stainless steel hardware and a carbon ceramic mechanical seal. All units will free flow 50GPM with its heavy-duty electric motor while only drawing 6 AMPS. Pumps will work with 12V or 16V electrical system. Pumps are available in various anodized finishes and come complete with mounting hardware. Each unit is machined with o-rings for tight block sealing.

Clear	Red	Blue	Polished	Black	Description
PRP-6030	PRP-6180	PRP-6330	PRP-6480	PRP-6630	Electric Water Pump, Small Block Ford



Ford Electric
Water Pumps

Optional Ford Backing Plate

Clear	Description
PRP-6871	Small Block Ford Water Pump Backing Plate Early Style
PRP-6872	Small Block Ford Water Pump Backing Plate Late Model 289/5.0



SB Ford
Backing Plates

Late Model Ford Water Pumps

A great addition to PRP water line are these sleek **electric water pumps** made to work with a Ford modular engine. These pumps will fit all 4.6 and 5.4 liter late model Ford engines. CNC machined from billet aluminum and assembled with a heavy duty electric motor that will free flow 50 GPM. These pumps are also available with an option idler pulley so you can still run your stock accessories. Two types of idlers available, stock, and underdrive.

Part#	Description
PRP-4650	Electric Water Pump 4.6 & 5.4, w/o Idler Pulley
PRP-4651	Electric Water Pump 4.6 & 5.4, Stock Idler Pulley
PRP-4652	Electric Water Pump 4.6 & 5.4, Underdriver Idler Pulley



Ford Modular
Performance

Chevy Late Model Performance!

PRP has designed a **Chevy LS electric race water pump** that is machined from one piece of solid 6061-T6 billet aluminum, and utilizing all the top components from our current line of water pumps. Heavy duty electric motor for high flow, carbon ceramic seal for positive sealing, o-ring inlets for easy assembly and o-ring mounting for quick installation. Each unit is complete with anodized finish and comes with stainless mounting hardware.

Part #	Description
PRP-4550	Clear Chevy LS Electric Water Pump, Race
PRP-4551	Black Chevy LS Electric Water Pump, Race



LS Accessories

PRP-4535 Billet Inline Thermostate Housing



PRP-4540 Billet Water Neck



PRP-4545 Water Adapter Kit



For Use With Big Block Electric Water Pump

Solve those LS cooling Issues. PRP's new plumbing kit includes all of the necessary parts to complete a 4 corner water crossover on your LS engine. Each kit comes complete with #4 hose and #4 fittings to fully plumb your kit the way you want it. All necessary hardware and O-rings included. All fittings made from billet aluminum and are black anodized for corrosion protection.

Part #	Description
PRP-4530	Chevy LS Coolant Crossover Kit

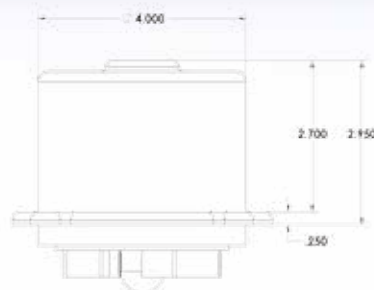


Mopar Performance!

These units were designed as a direct fit replacement to the stock water pump while using your existing stock housing. Each unit is design to fit B/RB/Hemi engines 350-440. Pump is machined from billet aluminum and available in clear or black anodized finish. All kits come complete with mounting hardware and a new gasket.

Clear	Black	Description
-------	-------	-------------

PRP-6060	PRP-6660	Electric Water Pump, Big Block Mopar
----------	----------	--------------------------------------



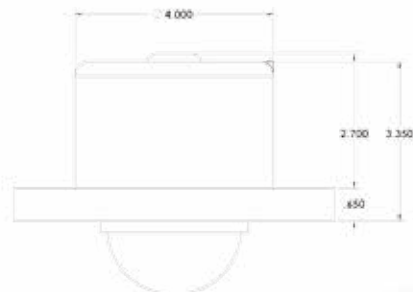
TRUCK PERFORMANCE!

Cummins 5.9L Diesel

These units are revolutionary for those applications that demand high cooling capacity while acting as a direct replacement for 5.9 Cummins diesel pumps. Pump is made from billet construction and available in clear anodized finish. All units come complete with mounting hardware and a new o-ring gasket.

Clear	Description
-------	-------------

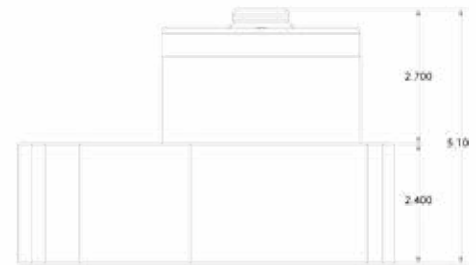
PRP-6070	Electric Water Pump, 5.9 Cummins Diesel
----------	---



50GPM

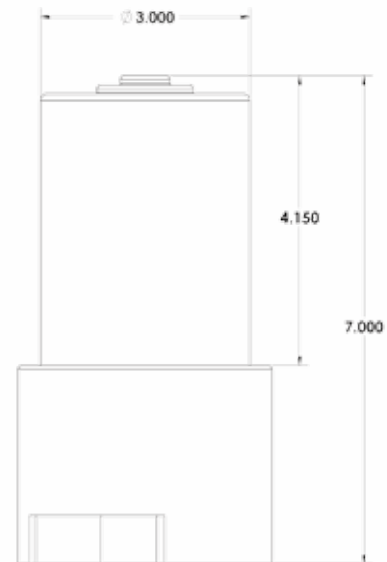
PRP's billet **remote mounted electric water pumps** are the answer to better engine cooling and space saving. These units are small and compact and only weigh about 6 pounds. These pumps are designed to be remotely mounted and can work as a standard water pump or can be used to reverse cool your engine. Reverse cooling can help get rid of those hot spots that occur from standard cooling and can result in horsepower gains. Our large remote pump will free flow 50GPM and our inline remote pump will flow 25GPM. Each unit is CNC machined from 6061-T6 billet aluminum and come anodized in clear, red, blue, polished or black.

Clear	Red	Blue	Polished	Black	Description
PRP-6050	PRP-6200	PRP-6350	PRP-6500	PRP-6650	Electric Water Pump, Remote Mount



25GPM

Clear	Black	Description
PRP-6055	PRP-6655	Electric Water Pump, Inline Remote Mount



Remote Water Pump Accessories

PRP has developed these unique mounting brackets for our remote water pump to take the guess work out of securely mounting the units. Our small remote pump has a billet bracket that clamps the electric motor while leaving two tabs for a positive mount. Our large remote pump has an optional cage mount bracket that will hold the pump to any round tube from size 1-1/2" to 1-3/4". All kits include stainless steel hardware and are clear or black anodized.

Clear	Black	Description
PRP-6110	PRP-6710	Remote Water Pump Cage Mounting Bracket, 1-1/2" to 1-3/4" Tubing
PRP-6115	PRP-6715	Inline Remote Water Mounting Bracket

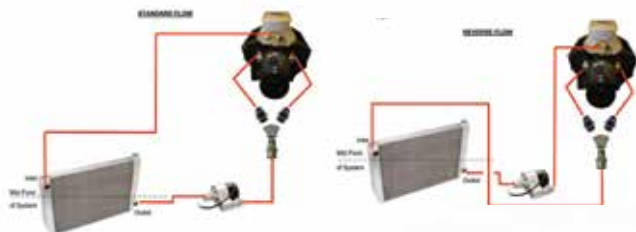


Billet Remote Water Pump Mounting Brackets

Remote Plumbing

Remote mounted water pumps have become growing popular in more recent years. However figuring out how to make that connection to the block is always a challenge. With PRP's new plumbing kits you now can make that transition with ease. All kits include a set of block adapters, "Y" block, several lengths of hose, and all necessary fittings to complete the job. PRP offers two kits, one for their large remote pump, and one for their small remote pump.

Part#	Description
PRP-6950	Large Remote Plumbing Kit, Fits SBC
PRP-6951	Large Remote Plumbing Kit, Fits BBC
PRP-6952	Large Remote Plumbing Kit, Fits SBF
PRP-6955	Inline Remote Plumbing Kit, Fits SBC
PRP-6956	Inline Remote Plumbing Kit, Fits BBC
PRP-6957	Inline Remote Plumbing Kit, Fits SBF



The diagrams to the left show two forms of plumbing for a remote water pump. The diagram on the left shows a standard flow configuration. This is a typical flow configuration for a normal cooling system. The diagram on the right shows a reverse cooling configuration. This set up is typical on racing applications.

NOTE: Diagrams only show picture of standard remote. Inline remote will use same flow configuration.

Remote Water Pump Plumbing Kits

For Use With PRP Water Pumps

At PRP we offer several configurations of hose adapters. Each adapter will work with any one of our cooling products. All fittings are o-ringed and hexagonal for easy sealing and easy tightening. Fully machined from billet aluminum and anodized for a clean finish. Available in 1 1/4", 1 1/2", 1 3/4", 12AN, 16AN, and 20AN. Also available hose inlet extensions and adapters

Clear	Red	Blue	Polished	Black	Description
PRP-6100	PRP-6250	PRP-6400	PRP-6550	PRP-6700	Replacement 1.25" Inlet
PRP-6101	PRP-6251	PRP-6401	PRP-6551	PRP-6701	Replacement 1.50" Inlet
PRP-6102	PRP-6252	PRP-6402	PRP-6552	PRP-6702	Replacement 1.75" Inlet
PRP-6103	PRP-6253	PRP-6403	PRP-6553	PRP-6703	Replacement #12AN Inlet
PRP-6104	PRP-6254	PRP-6404	PRP-6554	PRP-6704	Replacement #16AN Inlet
PRP-6105	PRP-6255	PRP-6405	PRP-6555	PRP-6705	Replacement #20AN Inlet
PRP-6106					Replacement 1 1/4-12 to 1 1/4-12 Adapter
PRP-6107					Replacement 1 1/4-12 to 1 1/4-12 Adapter
PRP-6108					Replacement 1.75" Extra Long Inlet



PRP-6100



PRP-6252



PRP-6401



PRP-6704



PRP-6552



PRP-6555



PRP-6255



PRP-6107



PRP-6108

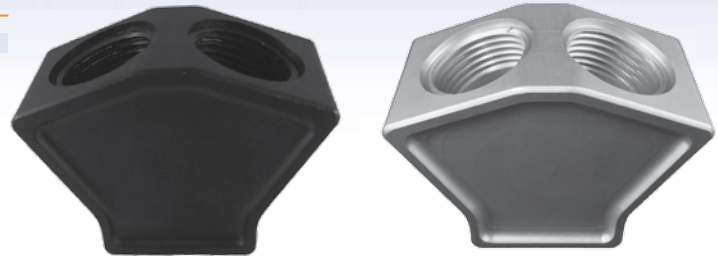
These **AN port adapter fittings** are available in several configurations and will work in conjunction with other cooling products in our line to complete those necessary connections. All fittings are machined from 6061 billet aluminum and available in black anodized finish

Black	Description
PRP-6730	12AN Port Fitting to 10AN Hose
PRP-6731	12AN Port Fitting to 12AN Hose
PRP-6732	12AN Port Fitting to 16AN Hose
PRP-6733	12AN Port Fitting to 1-1/4" Hose
PRP-6734	12AN Port Fitting to 1-1/2" AN Hose
PRP-6735	12AN Port Fitting to 1-3/4" AN Hose



Our **Y-Blocks** are CNC Machined from billet aluminum and are the answer to connecting 2-AN lines to either 1 radiator hose or 1-AN line. There are 2 ports that will accept a 12AN o-ring style fitting and 1 port that will accept one of our o-ring style hose adapter fittings, which are available in 1 1/4", 1 1/2", 1 3/4", 12AN, and 16AN.

Clear	Black	Description
PRP-6825	PRP-6826	2 to 1 "Y" Block



2 To 1 Y Block

Adapters. When using a remote mounted water pump you have to make the connection to the block somehow, and the easiest way to do that is with these male AN block adapters. Our adapters are CNC machined from 6061 billet aluminum and available in clear or black anodized. Each adapter is o-ringed for a tight seal and includes stainless steel mounting hardware. Available in 12AN and 16AN.

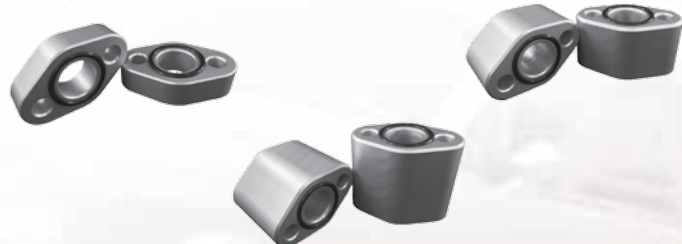
Clear	Black	Description
PRP-6850	PRP-6852	Block Adapter Kit Small Block Chevy 12AN
PRP-6851	PRP-6853	Block Adapter Kit Small Block Chevy 16AN
PRP-6860	PRP-6862	Block Adapter Kit Big Block Chevy 12AN
PRP-6861	PRP-6863	Block Adapter Kit Big Block Chevy 16AN
PRP-6870	PRP-6875	Block Adapter Kit Small Block Ford 12AN



AN Block Adapters

Spacers are used to space the water pump away from the block, and is a great investment when extra clearance is needed in the front of the engine. Each spacer has o-ring seals and is clear anodized for corrosion resistance. Available for small block and big block chevy in sizes 3/4", 1-1/2", and 2-1/4".

Clear	Description
PRP-6800	Water Pump Spacer Kit 3/4" Small Block Chevy
PRP-6801	Water Pump Spacer Kit 1 1/2" Small Block Chevy
PRP-6802	Water Pump Spacer Kit 2 1/4" Small Block Chevy
PRP-6810	Water Pump Spacer Kit 3/4" Big Block Chevy
PRP-6811	Water Pump Spacer Kit 1 1/2" Big Block Chevy
PRP-6812	Water Pump Spacer Kit 2 1/4" Big Block Chevy


Water Pump
Spacers

Great Add On!

Our gleaming **radiator cap** starts with a premium 16-pound radiator cap and then we install a CNC-machined billet aluminum cover that's been highly polished or anodized black.

Polished	Black	Description
----------	-------	-------------

PRP-7650	PRP-7651	Radiator Cap W/ Aluminum Cover
----------	----------	--------------------------------



360°. If you're looking to make the connection from your upper radiator hose to your engine PRP's billet construction water necks are the answer. Each water neck is fully CNC machined from 6061-T6 aluminum and is made to swivel 360 degrees. All water necks come complete with stainless steel mounting hardware and o-ring for positive sealing. All units will accept any standard thermostat and one of our o-ring style water pump fittings. All water necks are available in either clear, red, blue, or black anodized finishes for long lasting corrosion protection.

Clear	Red	Blue	Polished	Black	Description
-------	-----	------	----------	-------	-------------

PRP-6120	PRP-6270	PRP-6420	PRP-6570	PRP-6720	Chevy Water Neck 1-1/4" Upper Hose
PRP-6121	PRP-6271	PRP-6421	PRP-6571	PRP-6721	Chevy Water Neck 1-1/2" Upper Hose
PRP-6122	PRP-6272	PRP-6422	PRP-6572	PRP-6722	Chevy Water Neck 1-3/4" Upper Hose
PRP-6123	PRP-6273	PRP-6423	PRP-6573	PRP-6723	Chevy Water Neck 12AN Upper Hose
PRP-6124	PRP-6274	PRP-6424	PRP-6574	PRP-6724	Chevy Water Neck 16AN Upper Hose
PRP-6125	PRP-6275	PRP-6425	PRP-6575	PRP-6725	Ford Water Neck 1-1/2" Upper Hose



PRP's new inline thermostat housing provides an easy way to add a remote thermostat. Works with most GM style thermostats, and will fit any 1-1/2" upper radiator hose. Made from billet 6061-T6 aluminum and finished with an anodized finish in either clear or black. Kit includes stainless steel hardware and re-usable thermostat gasket.

Clear	Black	Description
-------	-------	-------------

PRP-6835	PRP-6836	Inline Thermostat Housing Kit
----------	----------	-------------------------------



Tanks!

PRP's intercooler plumbing kit is the answer for any turbo application. This kit was designed to solve your water to air intercooler headaches in one package. This kit includes all top of the line products that are black anodized for a long-lasting great look and corrosion protection. Kit comes complete with 5.5 Gallon water tank, billet inline water pump, billet mounting brackets, extra-large billet fill cap, two 1/2" NPT female bungs, 1/8" NPT drain, and all necessary fittings and hose.

Part #	Description
--------	-------------

PRP-6970	Intercooler Tank & Plumbing Kit
PRP-6975	Intercooler Tank



PRP Not only offers complete tank kits we will do **custom tanks** as well. Bring us your vision and we will turn it into reality. We will engineer your idea create a drawing, and build your one of a kind custom aluminum tank. For more information and pricing please contact us today.

New



No need to fight getting ice into your **intercooler** again! With PRP's billet machined extra-large filler caps it is not a problem at all. These one of kind extra-large caps offer almost a 7" opening and are sealed with a Buna-N O-ring for a water tight seal. All kits are completed with an anodized finish in clear, red, blue, or black. Two available styles complete with stainless steel hardware in either a weld on version, or bolt on version*

Clear	Red	Blue	Black	Description
PRP-7635	PRP-7636	PRP-7637	PRP-7638	Billet Intercooler Kit*
PRP-7640	PRP-7641	PRP-7642	PRP-7643	Billet Intercooler Cap Kit w/ Bolt on Bung

* Special order only



Our Stylish **filler caps** are a great addition wherever a filler cap is needed. These universal caps will fit any application including rear ends, inspection covers and overflow tanks includes an o-ring for positive sealing and a weld-in bung of either steel or aluminum. Also available with an aluminum bolt on bungs.

Clear	Red	Blue	Black	Stealth	Description
PRP-7600			PRP-7603	PRP-7670	Filler Cap W/ Aluminum Bung
PRP-7601				PRP-7671	Filler Cap Kit W/Steel Bung
PRP-7602				PRP-7672	Filler Cap W/ Aluminum Bolt On Bung
PRP-7605	PRP-7606	PRP-7607	PRP-7608	PRP-7675	Large Filler Cap W/ Aluminum Bung
PRP-7630	PRP-7631	PRP-7632	PRP-7633	PRP-7676	Large Filler Cap W/Steel Bung



Our **Fuel Cell Caps** and Bung Assemblies is an unique answer to replacing your existing plastic cap. Our cap kits are designed as a direct replacement for any Jaz, Harwood, or RCI Fuel cell with a 4.438" 6 hole or 5.343" 12 hole bolt circle. We also offer a weld-in cap and bung assembly each cap is O-ring sealed and comes complete with stainless hardware.

Clear	Red	Blue	Black	Stealth	Description
PRP-7610	PRP-7611	PRP-7612	PRP-7613	PRP-7680	Fuel Cell Cap and Bung Assembly
PRP-7615	PRP-7616	PRP-7617	PRP-7618	PRP-7681	Fuel Cell Cap Assembly W/ 12 Bolt Bung



Direct fit rubber **O-ring gaskets** for all 6 bolt and 12 bolt fuel cell cap kits.

New



Part #	Description
PRP-7625	6 Hole Fuel Cell Flange Gasket
PRP-7626	12 Hole Fuel Cell Flange Gasket



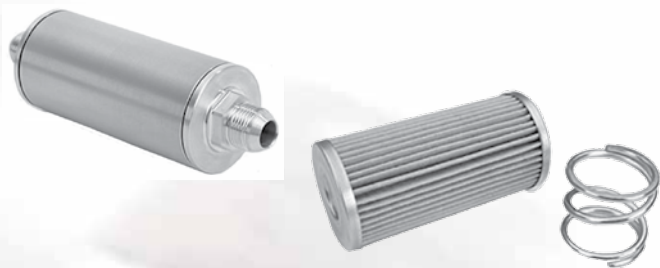
PRP's adjustable timing pointers are CNC-machined from 6061-T6 billet aluminum. Each pointer is fully machine lightened for a great looking addition to any engine. All pointers are made to direct fit each application and are designed to work with small block Chevy, big block Chevy, and small block Ford. Each main body is black anodized along with a clear anodized adjustment assembly for long lasting corrosion protection. All pointers have a 4 degree range of movement for finding that precise timing location. Stainless steel fasteners are also included.

Part #	Description
PRP-8500	Billet Timing Pointer Small Block Chevy, Fits 6-1/4" Balancer
PRP-8501	Billet Timing Pointer Small Block Chevy, Fits 6-3/8" Balancer
PRP-8502	Billet Timing Pointer Small Block Chevy, Fits 7" Balancer
PRP-8503	Billet Timing Pointer Small Block Chevy, Fits 7-1/4" Balancer
PRP-8504	Billet Timing Pointer Small Block Chevy, Fits 8" Balancer
PRP-8505	Billet Universal Timing Pointer Small Block Chevy, Fits 6-3/8" To 8" Balancer
PRP-8510	Billet Timing Pointer Big Block Chevy, Fits 7" Balancer
PRP-8511	Billet Timing Pointer Big Block Chevy, Fits 7-1/4" Balancer
PRP-8512	Billet Timing Pointer Big Block Chevy, Fits 8" Balancer
PRP-8513	Billet Universal Timing Pointer Big Block Chevy, Fits 7" To 8" Balancer
PRP-8520	Billet Timing Pointer Small Block Ford w/10 o'clock TDC, Fits Stock & SVO Blocks
PRP-8521	Billet Timing Pointer Small Block Ford w/11 o'clock TDC, Fits Stock & SVO Blocks



PRP's **billet inline oil filter** is the answer to safely relocating your oil filter while saving space at the same time. These units only weigh about 1lb. and are completely made from billet construction using 6061-T6 aluminum. Each unit has two removable o-ring end caps for easy cleaning and filter changing. The filter elements used are a one of a kind racing filter made by Wix specifically for Joe Gibbs racing, the same filter elements used in NASCAR. Each unit has incorporated AN fittings in either 10AN or 12AN. All parts have a clear anodized finish for corrosion protection.

Part #	Description
PRP-7800	Billet Inline Oil Filter - 10AN Male Inlet, Outlet
PRP-7801	Billet Inline Oil Filter - 12AN Male Inlet, Outlet
PRP-7810	Billet Inline Oil Filter - Replacement Element & Spring
PRP-7811	Billet Inline Oil Filter - Replacement O-Ring Kit



PRP's distributor hold downs are designed to hold your distributor firmly in place to prevent any movement. Machined from 6061 billet aluminum and available in clear, red, blue, or black anodized finishes. Each kit comes complete with a stainless steel stud, nut, and washer. Fits V-8 Chevy and 90 V-6.

Clear	Red	Blue	Black	Description
PRP-7500	PRP-7510	PRP-7520	PRP-7530	Anodized Chevy Distributor Hold Down



Distributor Hold Downs

Each of our **fuel pump block-off plates** is machined from 6061-T6 billet aluminum and is available in four different anodized finishes: clear, red, blue, or black. Included with each plate are counter-sunk stainless steel buttonhead bolts, along with a gasket for positive sealing.

Clear	Red	Blue	Black	Description
PRP-7100	PRP-7200	PRP-7300	PRP-7400	Fuel Pump Block-Off Plate Kit, Small Block Chevy
PRP-7150	PRP-7250	PRP-7350	PRP-7450	Fuel Pump Block-Off Plate Kit, Big Block Chevy



Fuel Pump Block-Off Plates



SB Chevy Stud
Girdles

PRP's Stud girdles are the answer to securely holding your poly locks for precision rocker arm adjustment. All girdle kits are available with 3/8" or 7/16" poly locks, also available without poly locks. These bars are machined from 6061 billet aluminum and machined to a bright finish. All bars are spring loaded and come complete with hardware.

Product #	Description
-----------	-------------

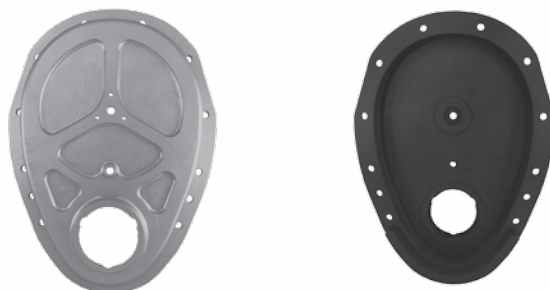
PRP-7000	Rocker Arm Stud Girdles, Small Block Chevy
PRP-7010	Rocker Arm Stud Girdles Set, Small Block Chevy 3/8"
PRP-7011	Rocker Arm Stud Girdles Set, Small Block Chevy 7/16"



These **light weight billet timing covers** are a great addition to any engine. Made from solid billet 6061-T6 aluminum and machined to a clean look while still providing top notch function. Available in a clear or black anodized finish.

Clear	Black	Description
-------	-------	-------------

PRP-8550	PRP-8555	Small Block Chevy Timing Cover
----------	----------	--------------------------------



PRP's oil cooler block off is machined from 6061 billet aluminum and fits most GM LS oil pans. Designed to block off the factory oil cooler, and give you the availability of a pressure port for your gauges. Two styles available, one with the 1/8 NPT port, and one without. Both are O-ring sealed, and anodized for corrosion protection.

Part #	Description
--------	-------------

PRP-4525	Oil Cooler Block-Off LS
PRP-4526	Oil Cooler Block-Off LS, 1/8" NPT

New



Securely Hold Your LS Pick Up

These little brackets are the answer to securing your oil pump pick up on your LS engine. This bracket is designed to convert your single bolt pick up to a dual bolt. Kit comes complete with bracket and mounting hardware.

Part #	Description
--------	-------------

PRP-4527	LS Dual Bolt Oil Pick Up Bracket
----------	----------------------------------

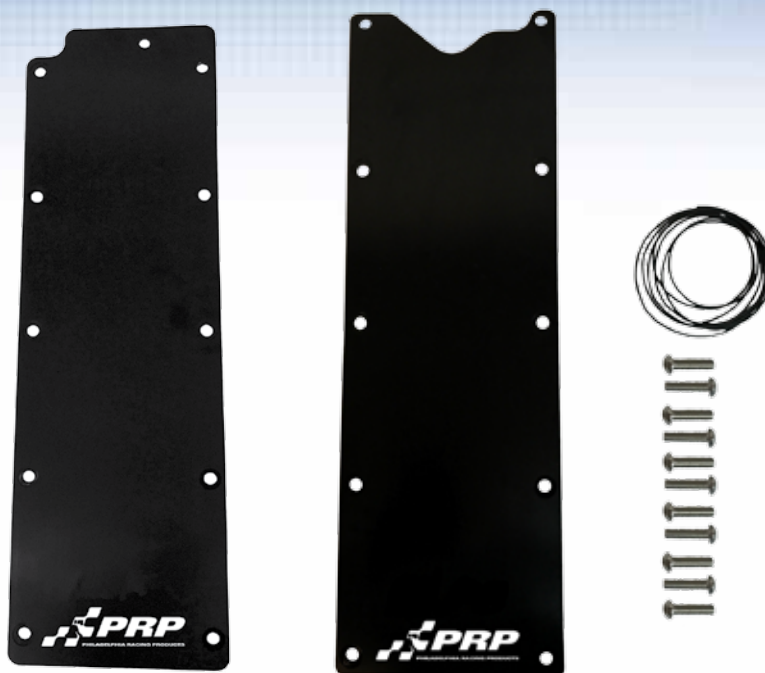
New



PRP's LS valley covers

are constructed from 6061 billet aluminum, and designed to fit LS1, LS3 engines. Each plate is black anodized for a great finish, and comes complete with stainless hardware, and O-ring for easy mounting.

New



Part # Description

PRP-4515	LS1 Billet Valley Cover
PRP-4520	LS3 Billet Valley Cover

LS Valley Covers

Another great addition to the PRP product line are these **Gen V valley trays** designed to fit your LT engine. These kits are available two ways, as a complete AFM delete, or just a valley tray. Each kit comes complete with all necessary fittings and hardware. All plates have a black anodized finish for a great look.

New

Part # Description

PRP-4561	Gen V AFM Delete & Valley Tray Kit
----------	------------------------------------



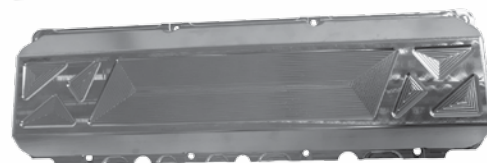
Gen V AFM Delete & Valley Tray Kit

PRP's billet valve covers are a very special addition to any engine. Each cover is fully billet constructed from 6061 aluminum and machined to a high quality finish. All covers will come complete with an anodized finish, and a press in steel insert washer in all bolt holes. A limited number of applications available, and all cover sales will be a build to order. Applications include Chevy DRCE 2, Chevy LS, and Chevy Splayed V6.

New



Part #	Description
PRP-4700	Billet Valve Cover, Chevy Splayed V6
PRP-4705	Billet Valve Cover, Chevy DRCE 2
PRP-4565	Billet Valve Covers, Chevy LS



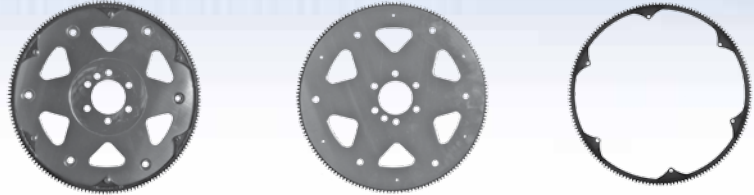
***Elite Performance has the winner edge
with PRP Racing Products.***



PRP's aluminum flexplate is probably the most unique plate on the market. Each plate starts with 6061 aircraft grade aluminum and then is surface ground on both sides for precision flatness which ensures minimal radial and lateral run out. Each plate is then machined to accept the 168 tooth replaceable steel ring gear that is pressed and bolted on with six 1/4"-20 stainless button head bolts. All plates are made to be as light as they can while strong enough to pass all 29.1 SFI certifications. This plate is machined to fit small block and big block Chevy, and will work with all convertor applications.

Part # Description

PRP-9400	Chevy 168 Tooth Billet Aluminum Flexplate
PRP-9410	Chevy 168 Tooth Ring Gear Only



Billet Aluminum
Flexplate

Our **universal billet shifter handle** is machined from one piece of solid billet and is styled with a light weight design, while constructed from 5/8" thick material for extra rigidity. All handles have an anodized finish and are available in clear, or black. The top of the handle is equipped with a stainless 3/8"-16 stud and jam nut for easy shift knob installation.

Clear Black Description

PRP-9440	PRP-9441	Billet Shifter Handle 7"
PRP-9445	PRP-9446	Billet Shifter Handle 8-1/2"
PRP-9450	PRP-9451	Billet Shifter Handle 10"



Billet Shifter
Handle

PRP's billet shift knob is a great compliment to our shift handles. Each knob is machined as a pistol grip design while incorporating the same lightweight configuration. All knobs are corrosion protected with an anodized finish and available in clear, or black. Kit includes hardware to mount 3/8"-16, 3/8"-24, or 7/16"-20 thread types.

Clear Black Description

PRP-9460	PRP-9461	Billet Shifter Knob
----------	----------	---------------------



Billet Shifter
Knobs

These CNC-machined billet aluminum **power glide servo covers** are the answer to securely holding the servo, along with superior sealing to stop any leaks. Each plate is black anodized for corrosion protection. Kit includes o-ring seal and stainless mounting hardware.

Black Description

PRP-9500	PG Servo Cover
----------	----------------



Power Glide
Servo Covers



PRP has done it again with their newly designed **LS coil mounting brackets RP's billet shift knob**. These brackets are engineered to fit LS 1, 2, 6, 7 engines, and will fit MSD coils. Each bracket is designed to be remote mounted, and comes complete with stand-offs for easy removal. Kit also comes complete with stainless hardware for mounting. Brackets are made of aircraft grade 6061 billet aluminum, and are anodized for that great finish.

New

Part #	Description
PRP-4510	Chevy LS Billet Coil Mounting Brackets, Fits LS1 and LS6
PRP-4511	Chevy LS Billet Coil Mounting Brackets, Fits LS2 and LS7



These new sleek coil mounting brackets take the guess work out mounting your coils. Each part is made of two pieces, a frame work, and insert. The frame is permanently mounted while the insert can be removed with the twist of two dzus clips. This bracket is made of 6061 aluminum and two tone anodized for a great finish. Will work with MSD Blaster, MSD SS, and MSD HVCII coils.

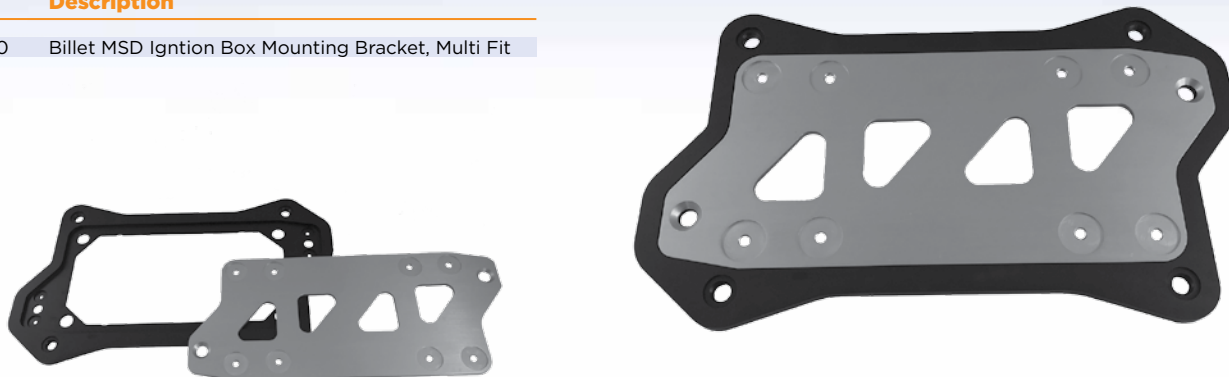
Part #	Description
PRP-2655	Billet MSD Coil Mounting Bracket, Multi Fit



PRP's new MSD box and coil mounting brackets take the guess work out of mounting your ignition components. Two part design with a frame and removable center. MSD boxes and coils are hard to change as it is and now we make it easy. Remove the dzus clips and the box or coil is out. Change, or mount on the bench and re-install. Made of a billet aluminum construction and two toned for a great finished look.

Part #	Description
--------	-------------

PRP-2600	Billet MSD Ignition Box Mounting Bracket, Multi Fit
----------	---



**Billet MSD Box
Mounting Bracket**

PRP has designed a **dash mount switch panel** that is one step ahead of the Competition! Each panel is made of a two part design with a removable center. Your frame stays permanently mounted while the inserted center can be removed. All fuses are conveniently mounted on the back side of the panel to keep a clean and un-cluttered face. Each panel comes complete with LED lighted switches, and all wired and ready to go. 6 Foot of extra wire is included to help make your install as smooth as possible. Each panel is two tone anodized, and laser etched for easy identification. Two panels available, a 5 switch w/starter, and a 4 switch.

Black	Description
-------	-------------

PRP-9101	5 Switch Dash mount Panel Kit
----------	-------------------------------

PRP-9100	4 Switch Dash Mount Panel Kit
----------	-------------------------------



Billet Switch Panels

(Accepted By: NHRA, IHRA, NMCA, NMRA, PSCA) PRP's unique tether kit is the answer to securing any removable collector. Each kit comes complete with a set of stainless steel t-bolt clamps, and 1/8" stainless steel tethers. (Optional billet aluminum tether brackets are available for quick collector removal). Clamps available in a wide range of sizes, and the tethers are available in 3 sizes, 10", 15", and 20" lengths.

Tether Kit

Part #	Description
PRP-7050	10" Header Tether Kit
PRP-7051	15" Header Tether Kit
PRP-7052	20" Header Tether Kit
PRP-7053	Header Tether Bracket



Primary Tube Clamp Kit

Part #	Description
PRP-7055	1-5/8" Primary Tube Clamp Kit
PRP-7056	1-3/4" Primary Tube Clamp Kit
PRP-7057	1-7/8" Primary Tube Clamp Kit
PRP-7058	2" Primary Tube Clamp Kit
PRP-7059	2-1/8" Primary Tube Clamp Kit
PRP-7060	2-1/4" Primary Tube Clamp Kit
PRP-7061	2-1/2" Primary Tube Clamp Kit
PRP-7062	2-5/8" Primary Tube Clamp Kit
PRP-7063	2-3/4" Primary Tube Clamp Kit
PRP-7064	2-7/8" Primary Tube Clamp Kit
PRP-7065	3" Primary Tube Clamp Kit



Collector Tube Clamp Kit

Part #	Description
PRP-7070	2-1/2" Collector Tube Clamp Kit
PRP-7071	2-5/8" Collector Tube Clamp Kit
PRP-7072	2-3/4" Collector Tube Clamp Kit
PRP-7073	2-7/8" Collector Tube Clamp Kit
PRP-7074	3" Collector Tube Clamp Kit
PRP-7075	3-1/8" Collector Tube Clamp Kit
PRP-7076	3-1/4" Collector Tube Clamp Kit
PRP-7077	3-1/2" Collector Tube Clamp Kit
PRP-7078	3-3/4" Collector Tube Clamp Kit
PRP-7079	4" Collector Tube Clamp Kit
PRP-7080	4-1/4" Collector Tube Clamp Kit
PRP-7081	4-1/2" Collector Tube Clamp Kit
PRP-7082	4-3/4" Collector Tube Clamp Kit
PRP-7083	5" Collector Tube Clamp Kit
PRP-7084	5-1/2" Collector Tube Clamp Kit



All components sold separately.





Match Those Front Wheels!

Each wheel is made from solid billet 6061-T6 aircraft grade material and designed to replicate the front wheels of any race car. Each wheel is molded with a polyurethane material that will not dent or give like a rubber wheel can. These wheels have over 10,000 lbs/ft. load capacity when your typical pro stock car will produce a load rating of 600-800 lbs/ft. These wheels are 4" in O.D. and have a 3/8" through hole for mounting. All designs have been tracked tested for over 4 years and run on vehicles that make over 1500HP.

Our popular billet wheelie bar wheels are now available in a black anodized finish. What sets these apart is the black finish, and that each wheel pattern is machined after anodized. This reveals that raw aluminum only on the inside of the wheels for a truly stunning finish.



Clear	Black	Description
PRP-9000	PRP-9010	Star Style
PRP-9001	PRP-9011	Hole Style
PRP-9002	PRP-9012	10 Spoke Star Style
PRP-9005	PRP-9015	Star Style w/ Bearing
PRP-9006	PRP-9016	Hole Style w/ Bearing
PRP-9007	PRP-9017	10 Spoke Star Style w/ Bearing



PRP front motor plates are made out of 1/4" Thick 6061-T6 billet aluminum and are precision machined so they will fit each application with ease. All plates are made from a one piece design which allows for extra strength to help eliminate engine movement. The perfect addition for quick and easy engine swaps.

Part #	Description
--------	-------------

PRP-9025	Front Motor Plate Small Block Chevy and 90 Degree V6
PRP-9030	Front Motor Plate Big Block Chevy



A great addition to PRP's front motor plates are there **Mid Mount Motor Plates**. Each plate is designed to work with a front motor plate to allow for extra strength and eliminate any engine movement. Each plate is available in either 090 steel or 1/4" aluminum. These plates will fit both big block Chevy and Small block Chevy

Steel	Aluminum	Description
-------	----------	-------------

PRP-9035	PRP-9036	Mid Motor Plate SB, BB, and 90 Degree V6k
----------	----------	---



These new sleek **mounting brackets** are the answer when looking for that clean finishing touch. Mounting items in a race car with a full cage is always a challenge. PRP's new chassis mount brackets solve that issue. Each bracket is made from 6061 aircraft grade aluminum and machined to fit tubing from 1-1/2" to 1-3/4". All brackets are black anodized and come complete with stainless hardware.

New

Part #	Description
--------	-------------

PRP-9200	Billet Universal Cage Mounting Bracket, Black
PRP-9205	Billet CO2 Bottle Mounting Bracket, 2" Bottle, Black



Never Strip Those AN Fittings Again!

These unique **billet AN wrenches** are the answer to tightening your AN fittings. Each wrench is machined from 3/8" 6061 Billet aluminum and anodized black for long-term corrosion protection. All wrenches are laser etched with the fitting size for easy identification. Wrenches are available individually or in a set.

Part #	Description
PRP-4000	AN Wrench, Fits 4AN Fitting
PRP-4001	AN Wrench, Fits 6AN Fitting
PRP-4002	AN Wrench, Fits 8AN Fitting
PRP-4003	AN Wrench, Fits 10AN Fitting
PRP-4004	AN Wrench, Fits 12AN Fitting
PRP-4007	AN Wrench, Included Sizes 4AN to 12AN



Billet AN Wrenches

Great Addition to any tool Box!

Anyone who runs nitrous needs one of these wrenches. Each wrench includes all fitting sizes needed for nitrous systems on one handle. Machined out of one piece of billet aluminum and has the capability of tightening 3AN, 4AN, 6AN, and 1-1/4" bottle nuts. Wrenches are black anodized and laser etched for easy size identification.

Part #	Description
PRP-4010	Nitrous Bottle Nut Combo Wrench
PRP-4011	Nitrous Bottle Nut Combo Wrench w/8AN



Nitrous Bottle Nut Combo Wrench

Two Tools In One!

These unique wrenches are two tools in one. You can measure your wheelie bar height and tighten your jam nuts with the same tool. Each wrench is black anodized and laser etched for easy measurement identification. Wrenches are available in three head sizes: 3/4", 15/16", or 1". Each wrench has a ruler that starts from 2" up to 7" with marks every 1/4".

Part #	Description
PRP-4015	Wheelie Bar Wheels Wrench 3/4 "
PRP-4016	Wheelie Bar Wheels Wrench 15/16 "
PRP-4017	Wheelie Bar Wheels Wrench 1"



Billet Wheelie Bar Wrenches

Visit us online at prpracingproducts.com to view our extensive high performance product line.

T-Shirts

These pre-shrunk ultra-cotton Gildan t-shirts feature either the PRP products logo, or the PRE engine shop logo. The PRP logo features the logo on the left chest and full back. The PRE logo is featured across the front and full logo on back. Great to wear at the track or in the garage.

Part # Description

MENS

PRP-9900	PRP Men's White Gildan T-Shirt Large
PRP-9901	PRP Men's White Gildan T-Shirt X-Large
PRP-9902	PRP Men's White Gildan T-Shirt 2X-Large
PRP-9903	PRP Men's Blue Gildan T-Shirt Large
PRP-9904	PRP Men's Blue Gildan T-Shirt X-Large
PRP-9905	PRP Men's Blue Gildan T-Shirt 2X-Large
PRP-9906	PRP Men's Red Gildan T-Shirt Large
PRP-9907	PRP Men's Red Gildan T-Shirt X-Large
PRP-9908	PRP Men's Red Gildan T-Shirt 2X-Large
PRP-9909	PRP Men's Black Gildan T-Shirt Large
PRP-9910	PRP Men's Black Gildan T-Shirt X-Large
PRP-9911	PRP Men's Black Gildan T-Shirt 2X-Large
PRP-9912	PRP Men's Gray Gildan T-Shirt Large
PRP-9913	PRP Men's Gray Gildan T-Shirt X-Large
PRP-9914	PRP Men's Gray Gildan T-Shirt 2X-Large
PRP-9915	PRP Men's Charcoal Gildan T-Shirt Large
PRP-9916	PRP Men's Charcoal Gildan T-Shirt X-Large
PRP-9917	PRP Men's Charcoal Gildan T-Shirt 2X-Large

LADIES

PRP-9920	PRP Ladies White Gildan T-Shirt Small
PRP-9923	PRP Ladies Blue Gildan T-Shirt Small
PRP-9926	PRP Ladies Red Gildan T-Shirt Small
PRP-9929	PRP Ladies Black Gildan T-Shirt Small
PRP-9932	PRP Ladies Gray Gildan T-Shirt Small
PRP-9935	PRP Ladies Charcoal Gildan T-Shirt Small

YOUTH

PRP-9940	PRP Youth White Gildan T-Shirt Medium
PRP-9942	PRP Youth Blue Gildan T-Shirt Medium
PRP-9944	PRP Youth Red Gildan T-Shirt Medium
PRP-9946	PRP Youth Black Gildan T-Shirt Medium
PRP-9948	PRP Youth Gray Gildan T-Shirt Medium
PRP-9950	PRP Youth Charcoal Gildan T-Shirt Medium



Color Swatches*

- ☐ White
- ☒ Blue (shown)
- ☒ Red (shown)
- ☐ Black
- ☐ Gray
- ☐ Charcoal

*colors may vary slightly



Part # Description

MENS

PRE-9900	PRE Men's White Gildan T-Shirt Large
PRE-9901	PRE Men's White Gildan T-Shirt X-Large
PRE-9902	PRE Men's White Gildan T-Shirt 2X-Large
PRE-9903	PRE Men's Blue Gildan T-Shirt Large
PRE-9904	PRE Men's Blue Gildan T-Shirt X-Large
PRE-9905	PRE Men's Blue Gildan T-Shirt 2X-Large
PRE-9906	PRE Men's Red Gildan T-Shirt Large
PRE-9907	PRE Men's Red Gildan T-Shirt X-Large
PRE-9908	PRE Men's Red Gildan T-Shirt 2X-Large
PRE-9909	PRE Men's Black Gildan T-Shirt Large
PRE-9910	PRE Men's Black Gildan T-Shirt X-Large
PRE-9911	PRE Men's Black Gildan T-Shirt 2X-Large
PRE-9912	PRE Men's Gray Gildan T-Shirt Large
PRE-9913	PRE Men's Gray Gildan T-Shirt X-Large
PRE-9914	PRE Men's Gray Gildan T-Shirt 2X-Large
PRE-9915	PRE Men's Charcoal Gildan T-Shirt Large
PRE-9916	PRE Men's Charcoal Gildan T-Shirt X-Large
PRE-9917	PRE Men's Charcoal Gildan T-Shirt 2X-Large

LADIES

PRE-9920	PRE Ladies White Gildan T-Shirt Small
PRE-9923	PRE Ladies Blue Gildan T-Shirt Small
PRE-9926	PRE Ladies Red Gildan T-Shirt Small
PRE-9929	PRE Ladies Black Gildan T-Shirt Small
PRE-9932	PRE Ladies Gray Gildan T-Shirt Small
PRE-9935	PRE Ladies Charcoal Gildan T-Shirt Small

YOUTH

PRE-9940	PRE Youth White Gildan T-Shirt Medium
PRE-9942	PRE Youth Blue Gildan T-Shirt Medium
PRE-9944	PRE Youth Red Gildan T-Shirt Medium
PRE-9946	PRE Youth Black Gildan T-Shirt Medium
PRE-9948	PRE Youth Gray Gildan T-Shirt Medium
PRE-9950	PRE Youth Charcoal Gildan T-Shirt Medium



Color Swatches*

- ☐ White
- ☒ Blue
- ☒ Red
- ☒ Black (shown)
- ☐ Gray (shown)
- ☐ Charcoal

*colors may vary slightly



Precision Engineering and Design

Here at PRP we produce all types of products for all types of industries. We have the capabilities to design, engineer, and produce just about anything. We not only design and produce our own products, but we do the same for other companies as well. Any idea can become reality here at PRP. Whether you need a part designed, reverse engineered or prototyped, PRP can help. We can advise and design your parts for longer wear, better functionality, and lower production costs. PRP is capable of all ranges of design, from a single part design, to turnkey solutions.

Our Engineering Services Include:

Machine Design

- New Part Design from concept to finished part
- Existing Part / Product upgrades
- From design to finished assembly

Reverse engineering

- Detailed prints available for approval prior to manufacture

Software

- Solid Works (2D & 3D)
- Mastercam



Custom Laser Marking

As of January 2011 a new addition was born, PRP Laser Marking. A subsidiary to PRP Racing Products is our laser company. This company is the answer to that competitive edge on the market. We now have the in house capabilities to produce any logo, date code, UPC code, or part number permanently marked into any part. With this new ND Yag laser we can produce a mark on any type of material at the highest quality.



Part of what makes PRP Racing Products so great is their sister company PRE. PRE is a high performance engine and machine shop that builds, tests, and develops combustion engines. PRE has the in house capabilities to blue print and spec any engine from street, strip, dirt, truck, or marine. One of PRE's core strengths is their ability to research and develop products designed for an engine. Products that are not only for the racing industry, but also for the standard manufacture as well. We have the ability to create a qualified product procedure from the test plan to the post data. PRE's in house testing equipment is second to none, and with there in house engineering no task is too large.

Take a look at the list below... Some of PRE's many capabilities!



***Engine Dyno**



***Design / Engineering**



***Head Work / Honing**



Stewart Warner

***Precision Balancing**



***Surface Grinding**



***Precision Crank Grinding**



***CNC Milling**



***CNC Programing**



***CNC Turning**

Let Us Quote Your Next Project!



PRP Shipping Information

- PRP offers SAME DAY SHIPPING on all orders placed before 3:00pm eastern standard time.
- All orders greater than \$50.00 will be shipped FREIGHT FREE to any location in the contiguous United States using standard ground shipping services.
- All orders with a value less than \$50.00 will be billed a flat shipping fee based upon the weight of the product purchased.
- Handling Fees are applied to each invoice at a rate of \$5.00 per order.
- All International Orders will be shipped using USPS International Priority Mail. Shipping charges will be applied to each invoice at the time of checkout.
- International Priority Mail (First class international, delivered in 3 to 7 days)
- The following Priority shipping services are available for orders placed before 3:00pm eastern standard time, Monday through Friday and shipping within the contiguous United States. Additional shipping charges will be applied to each invoice at the time of checkout.
- 2-day delivery (Second business day)
- Standard overnight delivery (Next business afternoon)
- Priority overnight delivery (Next business morning)
- First overnight delivery (Earliest next business morning delivery to select locations)

PRP Return Policy

If you are not completely satisfied with your purchase you may return the new unused item in its original box. All returns must be shipped freight prepaid within 30 days of purchase and have a copy of the original invoice for refund or exchange. When making a return please send all correspondents to the shipping address below.

- Send the package pre-paid (FedEx, UPS, US Postal Service INSURED) to: PRP Racing Products, Attn: Return Department, 1268 Geiger Road, Philadelphia, PA 19115

No COD or freight-collect shipments will be accepted. Credit will only be issued for merchandise only, and no refunds will be given for handling and shipping charges.

Limited Warranty

This limited warranty is extended to each individual who purchases a PRP product. This limited warranty applies only to the product, which after inspection by PRP, is found to have a defect in either material or workmanship.

- This warranty is good for 1 year only, and is limited to the repair or replacement of any defective parts of this product to the original purchaser only. Purchaser is aware that this product is to be used in a racing application and is subject to varied conditions due to the manner in which they are installed and used. PRP is not liable for any consequential damages, expenses or injury arising from the use, or misuse, or improper installation of this product. Further, PRP does not warranty any specified equipment nor does it warranty the skill level of any person that installs said products.
- This limited warranty will be void if any product was altered in any way or repaired by any other person other than the said manufacturer (PRP).

Warranty Return Procedure

- Any product to be returned to PRP for warranty inspection must have prior authorization from our sales department.
- The product must be shipped to PRP freight prepaid. When the product is received, it will be analyzed by PRP's technical support personnel. Final disposition will be made in accordance with PRP's limited warranty.
- Products deemed to be defective and returned within the 1 year warranty time period will receive either full credit or be replaced. No credit shall be issued for incomplete product.
- If it is determined that the cause of the failure was not due to a defect in material or workmanship, no credit will be issued. PRP will return the product to the customer, at the customer's expense, unless specifically requested by the customer in advance, that the product be destroyed.

PRP Racing Products
What You Want, When You Want It



Philadelphia Racing Products

268 Geiger Road
Philadelphia, PA 19115

Phone: (215) 969-3550

Fax: (215) 969-3548

Email: info@prpracingproducts.com

prpracingproducts.com